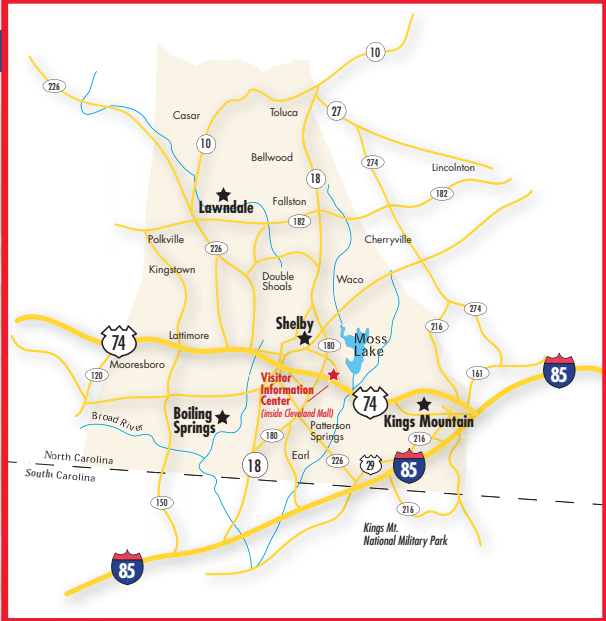




Mileage from Cleveland County to:

Charlotte, NC	43 mi.
Columbia, SC	135 mi.
Spartanburg, SC	38 mi.
Greensboro, NC	140 mi.
Greenville, SC	65 mi.
Raleigh, NC	210 mi.
Asheville, NC	74 mi.
Myrtle Beach, SC	220 mi.
Hickory, NC	40 mi.
Charleston, SC	250 mi.
Morganton, NC	40 mi.
Atlanta, GA	210 mi.



LODGING

- SHELBY**
Affordable Suites of America
 920 Grove Street • Shelby • 704-471-0441
Days Inn
 1431 West Dixon Boulevard • 1-800-329-7466
Econolodge
 825 West Dixon Boulevard • 704-482-3821
Hampton Inn
 2012 E. Marion Street • 704-482-5666
Holiday Inn Express
 2001 E. Dixon Boulevard • 704-480-0881
Super 8 Motel
 1716 E. Dixon Boulevard • 704-484-2101

- KINGS MOUNTAIN**
First Victory Inn
 728 York Road • 704-739-2544
Quality Inn
 722 York Road • 704-739-7070
Holiday Inn Express Hotel
 100 Woodlake Parkway • 704-734-0014

- BOILING SPRINGS**
AmericInn
 428 East College Avenue • 704-434-9996
The Hamrick-Goode House
 210 West College Avenue • 704-477-6997

- LAWNDALE**
Buffalo Creek Farm Bed & Breakfast
 422 East Ridge Drive, off Hwy 18 • 704-538-1479
De Starie Bed & Breakfast
 6533 Fallston Road • 1-866-538-3670



Toll Free Guest Information
866.305.9973
 TourClevelandCounty.com

VISITOR'S GUIDE

CLEVELAND COUNTY

~ North Carolina ~



SHELBY • BOILING SPRINGS • KINGS MOUNTAIN • LAWNDALE



Toll Free Guest Information **866.305.9973**
 TourClevelandCounty.com



AGRI-TOURISM



Cleveland County Fair – The Cleveland County Fair was founded by the Shelby Kiwanis Club in 1924. Each year the fair has grown in size, activities, attendance and prestige. It has been tailored for every member of the family and has kept its educational background in agriculture education, industry, arts & crafts, history and other facets of everyday life. See you at the fair!



FESTIVALS

Toll Free Guest Information **866.305.9973**
TourClevelandCounty.com



Alive After Five – The nonprofit Uptown Shelby Association and its community partners present free outdoor concerts on the court square in Uptown Shelby every other Thursday beginning in May and ending in August. Musical performances from Beach music, classic rock, contemporary country, Motown dance bands.

Kings Mountain 5 Alive – Free outdoor concert held June through August featuring artists from around the region.

Kings Mountain Gateway Festival – A celebration of Kings Mountain history, culture and art with live music, demonstrations, food and family activities. *Held in October.*

Cleveland County is also within a short driving distance from the **Kings Mountain National Military Park and Museum**. Thomas Jefferson called it “The turn of the tide of success.” The battle of Kings Mountain, fought October 7th, 1780, was an important American victory during the Revolutionary War. The park preserves the site of this important battle. Here visitors can learn about the battle in an interactive learning center and enjoy outdoor activities.



A touch of Hollywood comes to Cleveland County as the Arts Council presents the **Real to Reel Film Festival** in July each year. Screenings of independent films from all over the world are held at the Joy Performance Center in Kings Mountain. The festival ends with a gala awards ceremony. *Held in July.*



Foothill's Merry Go Round Festival – With the Spring thaw comes the “Foothills Merry-Go-Round” festival held each April at Shelby's City Park. Thousands from around the area enjoy a day of games, rides, good food and cap off the evening with a musical concert and fireworks. The main attraction, of course, is the restored 1920's Shelby City Park Carousel housed in the climate controlled Dover Bailey Carousel Pavilion. The park complex includes a modern outdoor pool, gymnasium, athletic fields, miniature train and a 9-hole golf course. *Held in April.*



Broad River Greenway – Rubber Ducky you're the one, you make summertime lots of fun! If you thought one rubber ducky tickled your fancy imagine watching 2500 racing their way down river along with your hopes and dreams of fabulous prizes. The Broad River Greenway holds its annual birthday party on the third Sunday in September with free cake, ice cream, live music, storytelling and games galore. Grab a picnic lunch and come enjoy the fun! *Held in September.*



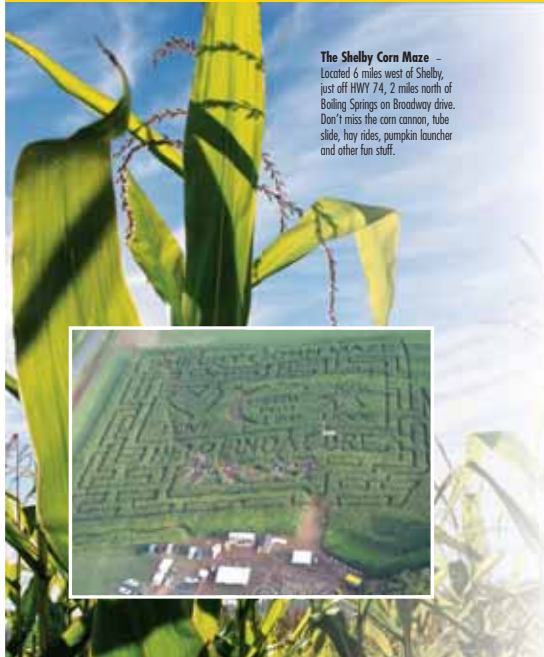
Carolina Pottery Festival – Featuring more than 90 local and regional potters showing and selling traditional and contemporary works. Pottery demonstrations throughout the day. *Held in November.*

Hog Happin' – Sanctioned by the Kansas City Barbecue Society, Hog Happin' is a North Carolina State Championship as well as a Kansas City Royal qualifying event. A classic car show, arts and crafts, and a motorcycle show are all part of the festivities. *Held in November.*

The **Art of Sound Music Festival**, held each year in Uptown Shelby, is the scene of the finest foot tapping in the foothills. Musicians and groups perform in several different venues including 2 outdoor stages. A wide variety of musical styles ranging from bluegrass, jazz, blues, country, rock, and Christian are featured as well as workshops and clinics. There is music and fun for the whole family. *Held in October.*



Spring Alive Festival in Boiling Springs – Held on the Gardner-Webb campus events include the Tour de Springs bike ride and YMCA Healthy Kids Fun Run. Activities for the entire family include inflatable, train rides, carriage rides, field games, swimming, climbing wall and others. Numerous dance and choral groups will perform on the main stage and a variety of music will be provided by local musicians. *Held in April.*



The Shelby Corn Maze – Located 6 miles west of Shelby, just off HWY 74, 2 miles north of Boiling Springs on Broadway drive. Don't miss the corn cannon, tube slide, hay rides, pumpkin launcher and other fun stuff.

Owl's Eye Vineyard & Winery – Located only 2.5 miles from the Historic Shelby Courthouse, Owl's Eye Vineyard and Winery offers a picturesque view of the South Mountains. We grow, harvest and produce a wide variety of Vinifera wines.



Slightly Different Nursery – Peak bloom season for these extraordinary hybrid daylilies is from mid-June to mid-July, although they specialize in rebloom. There's much to see even later in the year.

Harvest Works – Features 25 acres that is wheelchair accessible with picnic area, walking trail, petting zoo, organic farm, greenhouse, woodcarving shop and gift retail shop.



Knob Creek – Knob Creek Orchards & Creamery, located in Toluca on Highway 18, provides visitors with a year-round taste of agriculture. Fresh strawberries, peaches, and apples are available in season (you can even pick your own). Take a tractor-pulled wagon ride through their orchards and visit their store to relax in a rocking chair, play a game of checkers, shop for gifts, or enjoy homemade ice cream. Ample parking and a covered picnic area are available to accommodate large groups.

Lineberger's Killdeer Farm – Located on Goforth Road in Kings Mountain, is a great place to stop and cool down with a famous blackberry slushy. Visit the farm market for a variety of locally grown fruits and vegetables, jams, jellies and honey.



HISTORY & MUSEUMS



Webbley - J.A. Anthony remodeled this 19th century house in the Neo-Classical style. Judge James L. Webb occupied the house in 1911. Webbley was later home of Governor and Mrs. O. Max Gardner. Mrs. Gardner was the daughter of Judge James L. Webb. Part of the Central Shelby Historic District Walking Tour. (Maps available at the Visitor's Center.)

Kings Mountain Historical Museum Foundation - is located in the Historic City of Kings Mountain, NC. The museum is housed in the 1939 simplified Georgian revival style Post Office building on the corner of Mountain Street and Piedmont Avenue. The mission is to preserve and rotate existing exhibits and to inform the public on the history of the City of Kings Mountain and surrounding areas, and maintain the historic Post Office building.

Belwood Heritage Museum - The museum, which features memorabilia from the Upper Cleveland area, reflects lifestyles from homes and farms over the last 100 years. The museum will be open the first Sunday in each month from 2 to 4 p.m. Funding to develop these displays is raised at the annual Belwood Antique Tractor and Engine Show each fall.

Lawndale Historical Museum - Housed in a modern portion of the old Piedmont School founded in 1897. Features family, farm and mill village exhibits related to Cleveland Mill & Power Company. Original boxcar from the Lawndale Railway narrow gauge train is on display as well.

Kings Mountain Historical Fire Museum - exhibits of antique fire trucks and equipment.

International Lineman's Museum - Established in 1997, by Andy Price, the International Lineman's Museum is located at 529 Caleb Road in Shelby, NC and was created to preserve the history of linemen and the electrical utility industry. What began as a small dream to collect and display a historical lineman collection has grown into an anthology of several thousand items with artifacts dating as far back as the 1880's.

ANNUAL EVENTS IN CLEVELAND COUNTY

Winter

- Dec. - **Winter Wonderland in Shelby**
 - Carriage rides
 - Santa's House & Play Land & amusement rides
- Dec. - **Gardner-Webb University Festival of Lights**
- Dec. - **Cleveland County Choral Society Christmas Concert**
- Jan. - **The Big Chill (Cleveland County Arts Council)**
 - Dinner, art auction and live entertainment
- Feb. - **Valentine's Day at the Carrousel**
- Feb. - **Uptown Shelby Valentine's Day Carriage Rides**

Spring

- April - **Annual Firehouse NC BBQ Championship Cook-off, Kings Mountain**
- April - **Springs Alive Festival, Boiling Springs**
 - Bike race & fun run
 - Challenge course and pool open to the public
 - Gardner-Webb University softball and baseball games
 - 2008 will introduce an "if it floats" river race
 - Children games, activities and inflatables
 - Free entertainment
 - Arts and crafts
 - Well known artists
- April - **Members of the Tran-Siberian Orchestra in Concert with Cleveland County High School orchestras and choruses, Shelby**
- April - **Footfalls Merry-Go-Round Festival, Shelby**
 - attended by over 6,000 people
 - carnival rides
 - golf tournament
 - Slow pitch softball homerun derby
 - Tennis workshop
- April - **Senior Olympics**
- April - **Art on the Square**
 - Juried art show of over a hundred regional artists
- May - **Alive After Five, Shelby**
 - FREE street concert every 1st & 3rd Thursday through August.
- May - **NC Championship Sheep Dog Trials, Lawndale**
 - Cultural Heritage Event (part of the Scottish Games)
 - Educational - dog handlers talk about training, the partnership of farmer and dog and the history of the event
- May - **Bar H Championship Rodeo & Country Festival, Boiling Springs**
- May - **National Barrel Racing Horse Association Competition, Lawndale**
- May - **Belwood Celebration Day**

TOP 10 OF CLEVELAND COUNTY

1. **Historic Cleveland County Court House**
A 1907 Classical Revival court house can be visited in the historic district of our county seat, Shelby. A two-hour self guided walking tour points out 38 other architecturally significant structures dating from the 1850's. Plans are underway for the Court House to become the *Earl Scroggs Center for the Musical Stories of the Carolina Foothills*.
2. **Shelby City Park Carrousel**
One of only five historic restored all-wood carrouseles in North Carolina, out of 150 in the US. It is the only one in North Carolina operating year-round thanks to the beautiful, heated Anne Dover Bailey Carrousel Pavilion. Guests can ride for a nostalgic 50 cents.
3. **Kings Mountain State Park**
A picturesque setting that begins in Kings Mountain, North Carolina but stretches across the South Carolina border and adjacent to Kings Mountain National Military Park. Guests can hike, camp, fish, picnic, paddle, play miniature golf, or visit the museum or the living history farm.
4. **South Mountain State Park**
One of the state's most rugged parks. Hike the trail to High Shoals Falls to witness the roar of the waterfall as it pours into a large pool. Backpack through the woodlands for primitive camping. Fish for trout in miles of mountain streams, or bicycle along the 18-mile mountain-bike loop. The park includes elevations up to 3,000 feet, a waterfall dropping 80 feet and more than 40 miles of trails. From equestrian camping to trout fishing, mountain biking to picnicking, a number of activities are available.
5. **Crowders Mountain State Park**
The beauty and diversity of Crowders Mountain State Park are best appreciated on its miles of hiking trails. Located approximately one mile from the park office are secluded areas for camping - areas so private there's often not another person in sight. Drinking water and restrooms are located nearby. Two large shelters with tables and grills are available for group picnics. Experienced climbers will enjoy the challenges of Crowders Mountain. Climbing is permitted in designated areas only. Located near the park office and picnic ground, the nine-acre, man-made lake has ample parking nearby. For those who like to be afloat, canoes can be rented at the park office year-round, weather and staff permitting. Paddle to secluded spots along the shoreline where the only sound is the ripple of the water. Fish from choice fishing spots on the banks or try your luck from the seat of a canoe. Bass and bream are waiting to be caught!
6. **Cemetourism**
The Sunset Cemetery in Shelby is not only known for its monument honoring award winning songwriter, Don Gibson, but also for its beauty. During the fall guests enjoy the beautiful autumn colors of over 550 trees.
7. **Broad River Greenway**
The 1500 acre Greenway, running along both sides of the Broad River, beckons nature lovers with a variety of animals and plants. A jewel in the bird watching community with common sightings of the Osprey, Broad-winged Hawk, Blue Heron, Sandpiper, Parula Warbler and more. Picnic pavilions along the trails offer the perfect place to picnic with the family. Children love the wooden play area and wading in the shallows of the river. Horseback riding is permitted and special parking is available for trailers. Canoes and tubes are available for rent from a local vendor. Public events are planned throughout the year making the Broad River Greenway a must see for every guest of Cleveland County.
8. **Art**
A map of the galleries, studios and stages of Cleveland County will guide you through your journey of discovering paintings, sculptures, pottery, jewelry and more. Public art can be found on murals in Kings Mountain and Shelby. An actual "new deal" painting is on display in the Kings Mountain City Hall. Both Shelby and Kings Mountain offer quality theatre productions on a regular schedule. Gardner-Webb University has rotating productions and gallery displays.
9. **Farms, Vineyards and More.**
Agritourism opportunities are limitless in Cleveland County. Pick-your-own farms, certified road side stands and farm tours are everywhere. Shelby corn maze is truly amazing! If you visit the area in October watch for ghosts and goblins, because it's haunted. Also enjoy a haunted hayride in the area. Several vineyards are available for tours and wine tasting. This area is known for its horse events such as rodeos and barrel racing.
10. **Extreme Sports**
There are several motor cross tracks, dragways and dirt tracks for race fans. If you are into water sports, bring your own or rent a canoe or tube and hit the Broad River. Ever caught fish with your hands? Grabbling is a huge hit at the Broad River. Several triathlons, biathlons, bike races and running events take place throughout the county from May through September. Mountain biking trails can be found along the Broad River Greenway and coming soon to Kings Mountain. GWU adventure course is open to the public by reservation.

Toll Free Guest Information **866.305.9973** • TourClevelandCounty.com

POINTS OF INTEREST



Gardner-Webb University

Gardner-Webb University began as a boarding high school and later became a junior college. Today Gardner-Webb is a thriving regional university with growing master's and doctoral programs. Every year our Distinguished Artist series hosts a number of nationally known artists.



Cleveland Community College — established in 1965 by and for the people of Cleveland County — is a comprehensive, public two-year college and member institution of the North Carolina Community College System. For over 40 years Cleveland Community College has provided higher education and job training opportunities to the people of Cleveland County and the surrounding area.



Hallelujah Acres® — The Hallelujah Acres® Health Food Store features everything from supplements and organic fruits and veggies to kitchen equipment, books, DVDs and teas! Hallelujah Acres Café® serves lunch weekdays and on Saturdays at the all-you-can-eat salad bar. Attend seminars and conferences and enjoy the pastoral half-mile walking trail that winds along the perimeter of the campus, past the organic garden and greenhouse.

Moss Lake — The John H. Moss Lake, located between Shelby and Kings Mountain, offers boating, swimming, and fishing. This man made lake has 57 miles of shoreline and a campground.



Broad River Greenway — Grabbling, noodling, hogging or tickling...no matter what name you prefer, it's a ton of fun for the whole family. Grabbling is the art of fishing for catfish with your bare hands. A variety of educational activities and FREE entertainment are offered year-round at the Greenway.

Summer

- June — **Over The Mountain Triathlon, Kings Mountain**
- June — **Western Carolina Swim Association meet, Shelby City Park**
- June — **Broad River Greenway**
 - Grabblin'
 - Emeralds and Gemstone history
 - Bees
- June — **Kings Mountain 5 Alive**
 - FREE outdoor concert series
 - Runs through August
- July — **Real to Reel Film Festival, Kings Mountain**
- July — **Kings Mountain Beach Blast**
- July — **Junior Olympic Swimming Qualifier, Shelby City Park**
- July — **Cleveland County Idol Competition**
- July — **Crest High School Car & Bike Show**
- July — **Fun at the Park, Shelby City Park**
 - Horseshoe tournament
 - FREE carousel and train rides
 - FREE swim at the pool
 - DJ with Karaoke and games & inflatables for kids
- July — **ABGA Sanctioned Boer Goat Show, Cleveland County Fairgrounds**
- August — **Tax Free Weekend**
- August — **Bethware Fair, Kings Mountain**

Fall

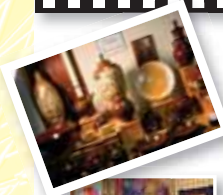
- Sept. — **Rubber Ducky Regatta, Broad River Greenway**
- Sept. — **Belwood Antique Tractor Show**
- Sept. — **Hamfest, Shelby (Cleveland County Fairgrounds)**
- Sept. — **Cleveland-Lincoln County Rose Show**
- Oct. — **Cleveland County Fair, Shelby**
 - Biggest county fair in the state
 - Livestock shows and competition
 - Live entertainment, carnival rides & amusements
- Oct. — **Art of Sound Music Festival, Shelby**
- Oct. — **Kings Mountain Gateway Festival**
- Oct. — **Halloween Attractions**
 - Bar H Haunted Hayride, Boiling Springs
 - Broad River Ghost Walk, Boiling Springs
 - Shelby Corn Maze, Shelby
 - Talking Pumpkin, Spooky Train & Haunted Tunnel, Shelby City Park
 - Trolley Ghost Tour, Shelby
 - Terror by the Tracks, Kings Mountain
- Oct. — **Fall for Shelby, Fall Festival**
- Nov. — **Art 'Round the Town Gallery Crawl, Shelby**
- Nov. — **Carolina Pottery Festival, Cleveland County Fairgrounds, Shelby**
- Nov. — **Hog Happin'**
 - NC State Championship
 - Kansas City Royal qualifying event
 - Classic car and motorcycle show

ARTS & CULTURE



Greater Shelby Community Theater — In 1975, a group of talented actors, business people, and community leaders, who acknowledged the importance of art within our community, pulled together to form the Greater Shelby Community Theater. Through the years, GSCT has continued striving toward artistic excellence and ever-increasing community involvement.

Season tickets include Kings Mountain Little Theater, Greater Shelby Community Theater and Rutherford Community Theater.



Pottery Festivals - Treasures of the Earth Pottery Show and Sale is held each year in February and showcases the works of over 25 regional artists. This yearly event is a favorite for artists and art collectors alike. Pottery ranges from functional to decorative and in all price ranges. Treasures of the Earth is one of the eight exhibits held each year by the Arts Council. The Carolina Pottery Festival is held annually in November at the Cleveland County Fair Grounds and features more than 90 local and regional potters showing and selling traditional and contemporary works. Pottery demonstrations, information on pottery lessons and education will be available.

Galleries - Original paintings, hand-woven throws and bags, imaginative wood-turned products, pottery, jewelry and more may be found in various galleries such as Buffalo Creek Gallery, Allen Griffin Pottery, Ron Philbeck Pottery, Synergy Studios & Gallery, Frame Masters Gallery, and Ambrosia Gallery & Studios.

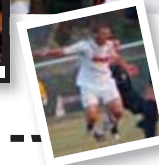
Southern Arts Society - Kings Mountain Arts Center is located in a restored downtown train depot and is host to many local artists, events and classes.

Cleveland County Arts Council - The Arts Center is home to an art gallery featuring the works of local and regional artists as well as performances and special events. A variety of classes are held year-round providing a continuing educational curriculum in the arts for children as well as adults. Summer Art Camp for children is held each year with over 300 in attendance. The Arts Council provides grants for artists, art organizations, and teachers; scholarships for students; events and programs featuring a wide range of artistic media and numerous opportunities for the community such as the Real to Reel Film Festival, Art of Sound Music Festival, Treasures of the Earth Pottery Sale and Art & Soul Holiday Art Sale.

SPORTS



Gardner Webb University Collegiate Sports
The university is a member of NCAA Division I, Atlantic Sun Conference and the Big South Conference.



Cleveland County Motor Sports Park — Adrenaline will be flowing, your heart will be pumping, and your breath will be taken, as you see the awesome display of horsepower! Dirt track racing is where NASCAR started and we have one of the best banked, red clay tracks in the state. **Shady Side Dragway** offers high speed drag racing in the Boiling Springs area.



Shelby Swim Meet — The Shelby City Park Olympic size swimming pool, with the addition of a fully automated scoreboard donated by SAC, has been deemed "one of the best swim venues in the Southeast." Used on a daily basis for open swim, lessons and aerobics the Center is also host to major championship swim meets, Junior Olympic Qualifiers and other meets.

Over The Mountain Triathlon — One of only six National Championship Qualifiers with over 400 participants each year.

