



SCENIC PLEASURES
HISTORIC TREASURES
CLEVELAND COUNTY, NORTH CAROLINA



Welcome to Cleveland County

Nestled in the rolling piedmont of the southwestern portion of North Carolina, Cleveland County is situated in the foothills of the beautiful Blue Ridge Mountains. Cleveland County is the gateway between Asheville and Charlotte and is centered between two of the largest metropolitan areas of the Carolinas—Charlotte and Greenville/Spartanburg.

Warm summers, mild winters, spectacular falls and springs invite you outdoors. Cleveland County is a wonderful place for year-round outdoor activities. From water recreation at Moss Lake and the Broad River Greenway to hiking at the Kings Mountain National Military Park, there are a variety of outdoor activities available for your enjoyment. We also have the state's largest county fair right here in Cleveland County.

History abounds in Cleveland County. From the Central Shelby Historic District with the Arts Center, Historical Museum, the Farmer's Market and many others to the Central School Historic District in Kings Mountain with the "oldest unchanged house" in the area to a private narrow gauge railroad in Lawndale.

Our family-oriented lifestyle, small-town charm, and Southern festival atmosphere, makes Cleveland County a great place to visit again and again.



First Baptist Church



Cleveland County Fair

Table of Contents

2	At Your Leisure
3	Horsin' Around
4	History & Heritage
6	Genealogy Information
6	Arts & Culture
8	The Great Outdoors
9	Kings Mountain Gateway to the Parks
10	Down on the Farm
11	Recreational Swimming
12	Just Plain Fun
14-15	County Map
16	Accommodations & Camping
18	The Links
19	Search for Treasures
19	Antiques & Specialty
21	Outlets
22	What's Cooking
27	How to Get Around
28	Regional Day Trips

Chamber members featured in burgundy.

Cover photos: Revolutionary War reenactment at Kings Mountain National Military Park (top right), Football at Gardner-Webb University (middle), Cleveland County Historical Museum (bottom), 1919 Herchell-Spillman Carrousell, Shelby City Park (back cover)

Horse & buggy ride around the courtsquare in Shelby, NC





Shelby Farmer's Market



Redbone Willy's Trading Co.

Shelby Farmers Market Year-round farmers market housed in a Colonial Revival brick warehouse. Listed on the National Register of Historic Sites. 200 West Warren Street • Shelby, NC 28150
Open: Tuesday – Saturday, 7 a.m. to 6 p.m.

Shelby City Park Carrousel & Train Restored circa 1919 Herschell-Spillman carrousel and miniature diesel “Rotary Special” train. 851 West Sumter Street • Shelby, NC 28150
(704) 484-6476 or (704) 484-6839
Open: March – November

Redbone Willy's Trading Co. A nostalgic old general store nestled at the foothills of the North Carolina South Mountains. • 6533 Fallston Road Lawndale, NC • (704) 538-3670

At Your Leisure

Cleveland Community College

A variety of art displays, theatrical performances throughout the year, a walking track, etc. 137 S. Post Road • Shelby, NC 28150
(704) 484-4000 • www.clevelandcommunitycollege.edu.

Gardner-Webb University

Guided tours available of the campus. Over 200 acres of rolling landscape rich with lawns and trees; theatre and music productions open to the public. Boiling Springs, NC • (704) 406-2361
www.gardener-webb.edu.

Craven E. Williams Observatory Lake Hollifield Complex, 6 acres with scenic lake, lighted walking trails, picnic areas, and home to the landmark 60' bell tower (Hollifield Carillon.)

For public observing nights, call (704) 406-4434

Hallelujah Acres® Health Store, Hallelujah Acres Café,SM and free seminars teaching that *You Don't Have to Be Sick!*SM from a Biblical perspective. 900 S. Post road • Shelby, NC 28151
(704) 481-1700 • www.hacres.com

Horsin' Around

Angel Hills Farm • 1165 Steel Bridge Road Mooresboro, NC • (704) 434-9898

Charlie Horse Farm • 1117 Chatfield Road Shelby, NC • (704) 480-1602

Circle T Farms
278 Benton Road
Kings Mountain, NC
(704) 734-0107

Half Halt Farms
225 Flint Hill Road
Shelby, NC
(704) 445-2276

Sundown Stables
Guided trail rides • 322 Beaver Dam Church Rd. Shelby, NC • (704) 434-8776

Piedmont Equestrian Park & Conference Center
Walking and horseback riding trails and wetlands, with events starting Fall 2004. A covered arena and 300 stalls in the near future. Call (704) 472-1478 for details.



History & Heritage

Central School Historic District

A four-block area anchored by the 1933 two-story brick school, which currently houses the Kings Mtn. administrative offices for Cleveland County Schools. Contact the Kings Mountain Landmark Commission, (704) 739-5217.

Central Shelby National Register Historic District

Two-hour self-guided walking tour of much of the original area of Shelby that was established in 1841 with 38 architecturally significant structures dating from the 1850s. For more information, contact (704) 481-1842 or Uptown Shelby Association (704) 484-3100.

Cleveland County Historical Museum

Listed on the National Register of Historic Sites.
Court Square • Uptown Shelby, NC
(704) 482-8186 • Closed for renovations from June – November 2004

International Lineman's Museum

Dedicated to preserving the heritage of linemen and the electrical industry. Hundreds of artifacts, some dating back into the late 1880s.
529 Caleb Road • Shelby NC • (704) 482-7638
www.linemanmuseum.com
Open: Monday – Friday, 8 a.m. to 5 p.m.

Kings Mountain Historical Fire Museum

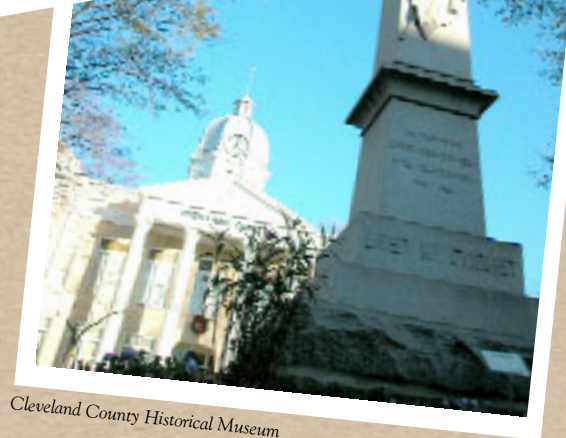
210 Cleveland Avenue • Kings Mountain, NC
(704) 734-0555 • Open: Memorial Day – September Sunday, 2 to 5 p.m; other hours by appointment.

Sunset Cemetery

Established in 1841 brings about an awareness and understanding of the historical significance of the people buried here who made an historical impact on the city, the state, and the nation. During the fall, visitors will enjoy the beautiful autumn colors of over 550 trees.
Martin Street at Sumter Street • Shelby, NC



Webbley at Christmas



Cleveland County Historical Museum

Kings Mountain Historical Museum

Housed in the 1939 simplified Georgian revival style Post Office building. Collection consists of a variety of late 19th and early 20th century objects allowing for changing exhibits throughout the year. Behind the museum is an early 19th century log house relocated from the outskirts of the city. 100 E. Mountain Street Kings Mountain, NC • (704) 739-1019
Open: Monday – Friday, 10 a.m. to 3 p.m. and many Saturdays, 1 to 3 p.m.

Lawndale Historical Museum

Housed in modern portion of the old Piedmont School founded in 1897. Features family, farm and mill village related to Cleveland Mill & Power Company. Original boxcar from the Lawndale Railway narrow gauge train. • Piedmont Drive Lawndale, NC • (704) 538-7212
Hours of Operation: June through October, Sunday, 2 to 4 p.m.

For Genealogy Information:

Broad River Genealogical Society,
1145 County Home Road • P.O. Box 2261
Shelby, NC • <http://www.rootsweb.com/~ncbrgs/index.htm>

Cleveland County Memorial Library Main Branch
104 Howie Drive • Shelby, NC • (704) 487-9069

Mauney Memorial Library
100 S. Piedmont Avenue • Kings Mountain, NC
(704) 739-2371



Students from Patterson Springs School in 1912

Arts & Culture

Allen Griffin Pottery Open studio and gallery featuring decorative and functional wheel-thrown, stoneware. • 302 S. Lafayette Street • Shelby, NC (704) 860-5499 • Call for hours

Leatherwood Trading & Coffee Co.
Saturday Nite Old Tyme Courthouse Opry
1 West Warren Street • Shelby, NC 28150
(704) 480-7323 • Bluegrass stage show, 7 to 11 p.m.

Ron Philbeck Pottery Open studio and gallery.
757 Wallace Grove Road • Shelby, NC
(704) 480-6046 • www.philbeckstudios.com
Call for hours.

Cleveland County Arts Center
Located inside the historic 1916 Post Office on the square in Uptown Shelby. The Arts Council manages the facility and provides the programs. (704) 484-ARTS (2787) • www.ccarts.council.org
Open: Monday – Friday, 9 to 5 p.m.

Synergy Studios & Gallery Featuring five different art mediums: stained glass, ceramics, basketry, fiber art, and interior architecture.
212-B W. Warren Street • Shelby, NC
(704) 487-0144 • Open: Wednesday – Friday, 11 a.m. to 3 p.m. or by appointment.

Joy Performance Center Dramas, comedy, and musical theatre; Lobby Coffee House and “game night” on second Friday of the month and free Saturday Flicks on the 3rd Saturday of the month all sponsored by Kings Mountain Little Theatre.
202 Railroad Avenue • Kings Mountain, NC
(704) 730-9408

Leatherwood Trading & Coffee Co.
Saturday Nite Old Tyme Courthouse Opry
1 West Warren Street • Shelby, NC 28150
(704) 480-7323 • Bluegrass stage show, 7 to 11 p.m.

Kings Mountain Arts Center
Located at 301 N. Piedmont Ave. in Kings Mountain, NC, the Southern Arts Society oversees programs offered at the center. Call (704) 739-5585 for more details.
Open: Saturday – Sunday, 1 to 4 p.m.

Phillip Philbeck at Frame Masters Gallery
Cleveland County artist Phillip Philbeck, whose North Carolina landscapes and seascapes depict a time fondly remembered, is the featured artist at the Gallery in Historic Uptown Shelby. Mr. Philbeck’s original and limited edition prints are featured. Private showings available by calling (704) 481-8312.

Greater Shelby Community Theater
Celebrating its 28th season during 2004-2005, the performances begin in October and run through June each year. A new children’s group has just been formed. Call (704) 480-8495 for details.

The Great Outdoors

Bicycle Route A part of the Cherry Bounce portion of the state designated bicycle route called the Piedmont Spur, it traverses east/west on NC 182 in Upper Cleveland County. Join a group of cycling Enthusiasts for bike rides. Call Ken Hoyle in Shelby, (704) 482-6512 or Tim Plonk in Kings Mountain at (704) 739-6281 or Recycle Shop at (704) 734-5226.

Brackett Cedar Park Campgrounds
4953 Casar Road (Hwy. 10N)
Lawndale NC 28090 • (704) 538-7124.

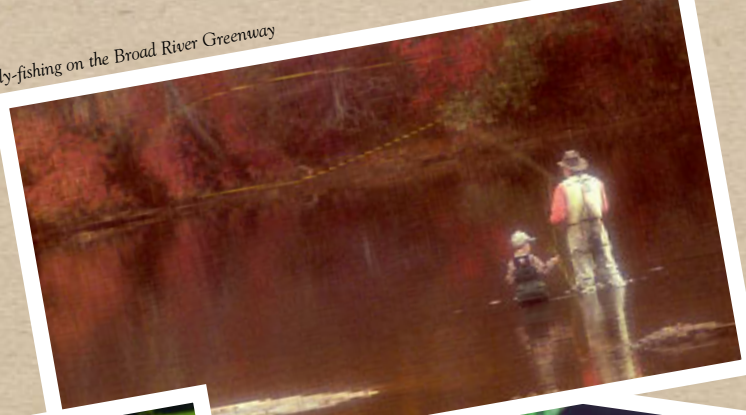
Broad River Greenway View the natural beauty of the Broad River located 3.3 miles south of Boiling Springs on NC Hwy. 150. Canoeing, swimming, tubing, fishing, picnicking, hiking, bicycling, horse trails, guided tours and special events and programs throughout the year. Home to the Dwarf-flowered Heartleaf, which is on the endangered species list. (704) 434-2357 (Boiling Springs Town Hall)
www.broadrivergreenway.com

Overmountain Victory National Historical Trail
A 313-mile path followed by the Patriot bands through parts of modern Tennessee, Virginia, and North Carolina ending at Kings Mountain National Military Park where they crushed Maj. Patrick Ferguson's Loyalist army on October 7, 1780. Call (864) 936-3477 for more information.

South Mountain State Park Located in southwestern Burke County and part of Cleveland County. Nature/hiking trails, bridle trails, mountain bike trails, camping, fishing, and picnic areas. From Shelby, take NC Hwy. 226. Call the park office for information on the scenic byway, (828) 433-4722.

Moss Lake Boating, fishing, swimming, camping, and picnic areas. • Oak Grove Road Kings Mountain, NC • (704) 482-7926

Fly-fishing on the Broad River Greenway



Revolutionary War reenactment at Kings Mountain National Military Park

Kings Mountain Gateway to the Parks:

Crowders Mountain State Park This 2,148-acre park is characterized by rugged peaks and breathtaking views. Hiking, picnicking, bird watching. 522 Park Office Lane • Kings Mountain, NC (704) 853-5375

Kings Mountain State Park "Living History Farm," picnic areas, camping, bridle trails, nature/hiking trails, fishing, and swimming. Exit 8 on I-85 in Kings Mountain to Hwy. 161. (803) 222-3209 or (803) 222-9467

Kings Mountain National Military Park
It is at Kings Mountain where Cornwallis' first misstep took place toward the defeat that marked the end of the Revolutionary War. Begin at the Visitors' Center, where exhibits help interpret the battle and continue through a foot trail leading to the main features of the battlefield. Over 500,000 visitors each year. Exit 8 on I-85 in Kings Mountain, NC to Hwy. 161. • (864) 936-7921
Open: Open daily, 9 to 5 p.m. Closed: Christmas, Thanksgiving and New Year's Day.



Down on the Farm

Boggs Farm Center • Fallston, NC
807 E. Stagecoach Trail • (704) 538-7176

Brushy Creek Emu Ranch • Shelby, NC
1209 W. Cabaniss Road • (704) 434-6760

Deer Springs Farms • Lawndale, NC
1515 W. Stage Coach Trail • (704) 538-6060

Hamrick Brothers, Inc. Working cotton gin. During growing season (October, November, and December), groups are welcome to visit. 321 Bradley Road • Shelby, NC 28152 (704) 434-6373 • Call for appointment.

HarvestWorks, Inc. at Aunt Marilyn's Farm
Features 25 acres that is wheelchair accessible with picnic area, walking trail, petting zoo, and gift retail shop • 1334 Spake Circle • Shelby, NC (704) 487-7777 • www.harvestworksinc.org

Knob Creek Farms & Creamery • Lawndale, NC
6471 Fallston Road • (704) 538-1405.

Killdeer Farms Working farm (fruits and vegetables), home made jams and jellies. 300 Goforth Road • Kings Mountain, NC 28086 (704) 739-6602 • Hours may vary by season.

South Mountain Farms • Belwood, NC
351 Flat Rock Road • (704) 538-6610

Triple G Ostrich Farm
257 Goforth Road • Kings Mountain NC
(704) 739-7169 • Please call for appointment

Shelby Livestock Yard, Inc. Sales on Tuesdays; tours available on catwalk of livestock area or bidding area. • 814 Wallace Grove Drive Shelby, NC 28150 • (704) 487-4023

Recreational Swimming

City of Shelby Aquatic Center
Shelby Parks and Recreation Department
Olympic size pool with designated diving; lap swim; beginner; and therapeutic areas. 850 W. Sumter Street • Shelby, NC (704) 484-6839 • www.cityofshelby.com
June through September

Catherine M. Neisler
Natatorium Year-round competitive swimming. Kings Mountain, NC (704) 734-5654

Kings Mountain YMCA
Public swimming during summer months. Call (704) 734-0449 for more information.

Gardner-Webb University
Public swim during academic year. Call (704) 406-3860 for more information.



City of Shelby Aquatic Center

Just Plain Fun

Patriots Park

Gazebo, city mural, picnic area.
Corner of Railroad and Gold Street
Kings Mountain NC • (704) 739-2103

Cleveland County Fair

Celebrating its 80th year in 2004, with attendance every year over 160,000, this fair is the biggest county fair in the state of North Carolina. It opens the last of September for 10 days. Call (704) 487-0651 for details.

Shelby City Parks and Recreation

In addition to park grounds, offers a variety of recreational and competitive sports; carousel and miniature diesel train.
901 W. Sumter Street • Shelby, NC
(704) 484-6839 • www.cityofshelby.com
Open: Monday through Friday, 8:30 a.m. to 5 p.m.

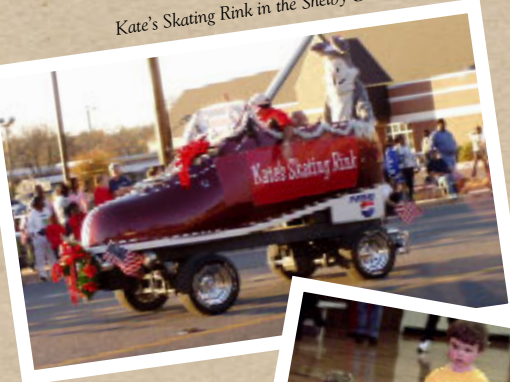
Shady Side Dragway

Hamrick Road • Boiling Springs, NC
(704) 434-7313.

Thunder Valley Speedway

Dirt track
248 Old Stagecoach Road • Lawndale, NC
(704) 538-9666 • Open: April through October

Kate's Skating Rink in the Shelby Christmas Parade



YMCA Soccer Camp



79th Annual Cleveland County Fair



"Rotary Special" Miniature Train

Kate's Skating Rink

1318 Cornell Drive • Shelby, NC
(704) 480-7555

Shelby AMF Bowling Center

1320 E. Dixon Blvd. • Shelby, NC
(704) 482-1442 or (704) 484-2695

YMCA Of Cleveland County

Fitness programs, sports, recreational and social activities for individuals and families.

Dover Foundation (Shelby)
411 Cherryville Road • (704) 484-9622

Kings Mountain
211 N. Cleveland Avenue • (704) 739-9631

Boiling Springs
112 E. College Avenue • (704) 434-0441

Carmike

Opening August 2004, this new cinema complex is located at the Cleveland Mall. There will be seating capacity for 1600 in the 10 cinemas location. Call (704) 482-3333 for movie listings.

Kings Mountain/Bessemer City Drive-In

1365 Bessemer City Road • Kings Mountain, NC
(704) 739-2150

Sunset Drive-In Theater

US-74 West of Shelby • (704) 434-7782

(704) 487-8521



Mileage from Cleveland County to:

Charlotte, NC	43 mi.	Asheville, NC	74 mi.
Columbia, SC	135 mi.	Myrtle Beach, SC	220 mi.
Spartanburg, SC	38 mi.	Hickory, NC	40 mi.
Greensboro, NC	140 mi.	Charleston, SC	250 mi.
Greenville, SC	65 mi.	Morganton, NC	40 mi.
Raleigh, NC	210 mi.	Atlanta, GA	210 mi.

Accommodations

Hotels and Motels	Credit Cards Accepted	Restaurant on Premises	Restaurant Adjacent	Bar/Lounge on Premises	Pool	Kitchen Facilities	Non-Smoking Rooms	Wheel Chair Accessible	Cable TV	Complimentary Breakfast	Free Local Phone Calls	Pets Allowed	Exercise Room
Affordable Suites Of America – Shelby 920 Grove Street • (704) 471-0441	●		●			●	●	●	●		●		
EconoLodge - Shelby 825 W. Dixon Blvd. • (704) 482-3821	●		●		●		●	●	●	●	●		
Days Inn - Shelby 1431 W. Dixon Blvd. • (704) 482-6721	●	●	●	●	●		●	●	●	●	●	●	
Comfort Inn - Kings Mountain 722 York Rd. • (704) 739-7070	●		●		●		●	●	●	●	●		
Super 8 Motel - Shelby 1716 E. Dixon Blvd. • (704) 484-2101	●		●				●	●	●	●	●	●	
Hampton Inn - Shelby 2012 E. Marion Street • (704) 482-5666	●		●		●		●	●	●	●	●	●	
Holiday Inn Express - Kings Mountain 100 Woodlake Pkwy. • (704) 734-0014	●		●		●	●	●	●	●	●	●		●
Holiday Inn Express - Shelby 2001 E. Dixon Blvd. • (704) 480-0881	●		●	●	●	●	●	●	●	●	●		●
Travel Lodge - Kings Mountain 728 York Road • (704) 739-2544	●		●		●		●	●	●	●	●	●	
Motel Royal - Kings Mountain 1709 Shelby Road • (704) 739-2236			●						●				
Town House Motel - Shelby 1530 W. Dixon Blvd. • (704) 483-8539	●		●			●		●	●	●	●		



DeSarte Bed & Breakfast



Hamrick-Goode House

DeSarte Bed & Breakfast • 1 (866) 538-3670
Romantic elegance in the Foothills
6533 Fallston Road • Fallston, NC

Bed & Breakfast

Buffalo Creek Farm B & B • (704) 538-1479
Boarding stables and riding ring.
422 Eastridge Drive • Lawndale, NC

Hamrick-Goode House • (704) 692-4534
Enchanting turn-of-century guesthouse.
210 West College Avenue • Boiling Springs, NC

Camping

Brackett's Cedar Park • Lawndale, NC
4953 Casar Road • (704) 538-7124

Moss Lake Campgrounds • Kings Mountain, NC
P.O. Box 49 • (704) 482-7926

Golden Valley Campground • Casar, NC
680 NC Hwy. 226 • (704) 538-8047



Cleveland Country Club

Royster Memorial Golf Course

9-hole golf course.
901 West Sumter Street • Shelby, NC
(704) 484-6823 • www.cityofshelby.com

Woodbridge Golf Links

18-hole golf course.
1007 New Camp Creek Church Road
Kings Mountain, NC • (704) 482-0353

The Links

Challenger 3 Golf Club

A family outdoor sports center: 18-hole, par 3 lighted golf course; driving range; batting cages; go-kart track; water bumper boats and more.
1650 North Post Road • Shelby, NC
(704) 482-5061

Cleveland Country Club

Cleveland Country Club is a private organization that includes an 18-hole championship golf course, tennis, swimming facility and clubhouse featuring formal and casual dining. Call (704) 482-1711 for details.
1360 E. Marion Street • Shelby, NC

Deer Brook Golf Club

18-hole golf course and clubhouse.
201 Deer Brook Drive • Shelby, NC
(704) 482-4653

Kings Mountain Country Club

18-hole golf course. Semi-private.
109 Country Club Drive • Kings Mountain, NC
(704) 739-5871

Pine Grove Golf Course

18-hole golf course. • 1108 Costner Road
Shelby, NC • (704) 487-0455

River Bend Golf Course

18-hole golf course. • 3005 Longwood Drive
Shelby, NC • (704) 482-4286

Search for Treasures

Shopping

Cleveland Mall

2001 E. Dixon Blvd.
Shelby, NC
(704) 484-2001

Creekside Plaza

E. Dixon Blvd. • Shelby, NC

Uptown Shelby

(704) 484-3100

Downtown Kings Mountain

(704) 730-2103



Antiques & Specialty

Antique Connection • Shelby, NC

321 E. Marion Street • (704) 484-1600
Open: Monday – Saturday, 10 to 5:30 p.m.

Antique Market of Shelby • Shelby, NC

318 S. Washington St. • (704) 481-0405
Open: Monday – Saturday, 10 a.m. to 5 p.m.
Sunday, 1 to 5 p.m.

Ashley's Antique Mall • Kings Mountain, NC

212 S. Railroad Avenue • (704) 734-0044
Open: Tuesday – Friday, 10 a.m. to 5 p.m.
Saturday, 10 a.m. to 4 p.m.

DeVane Interiors & Antiques

Kings Mountain, NC • 1308 Wales Road
Call (704) 868-7838 for an appointment.

(704) 487-8521

Fiddlesticks Antiques Mall II • Shelby, NC
4105 W. Dixon Blvd. • (704) 434-0345
Open: Wednesday – Saturday, 10 a.m. to 5 p.m.

Frame Masters Gallery
Since 1976 • Shelby, NC • 105 W. Warren St.
(704) 481-8312
Open: Monday – Friday, 9 a.m. to 5:30 p.m.
Saturday 10 a.m. to 2 p.m.

Ken's Antiques • Shelby, NC
1671 E. Marion St. • (704) 482-4062 or
(704) 482-4798
Open: 10 a.m to 5 p.m. by appointment

Leatherwood Trading Company • Shelby, NC
Comics, cards and collectibles.
1 W. Warren Street • (704) 480-7323
Open: Tuesday – Friday, Noon to 6 p.m.
Saturday, 10 a.m. to 3 p.m. and 6 to 11 p.m.

Lo-Len's Antiques • Kings Mountain, NC
5105 E. Dixon Blvd. • (704) 739-8596 or
(704) 482-5483
Open: Monday – Friday, 9 a.m. to 4 p.m.

Polkville Antiques & Collectibles • Polkville, NC
4412 Polkville Road • (704) 538-4066
Open: Monday – Saturday, 10 a.m. to 5 p.m.

This & That Novelty Shop
Kings Mountain, NC • 220 S. Railroad Avenue
(704) 739-3005

Serendipity Antiques • Lawndale, NC
232 E. Main Street • (704) 538-0310
Open: Monday – Saturday, 10 a.m. to 5 p.m.
Closed: Wednesday

Wildbird Antiques & Interiors • Fallston, NC
4809 Fallston Road • (704) 538-0099
Open: Monday – Saturday, 10 a.m. to 5 p.m.

Outlets

Morris & Daughter Fabrics • Shelby, NC
Fabrics • 636 S. Lafayette St. • (704) 481-1476
Open: Monday – Friday, 10 a.m. to 5 p.m.
Saturday, 10 a.m. to 2 p.m.

Ashe's Textile Factory Outlet • Fallston, NC
Fabrics and linens
4225 Fallston Road • (704) 538-1003
Open: Monday – Saturday 9 a.m. to 5 p.m.

Christopher's Cloth & Collectibles • Shelby, NC
Fabrics and collectibles
48 W. Randolph Rd. • (704) 484-9944
Open: Monday – Friday, 8:30 a.m. to 4:30 p.m.

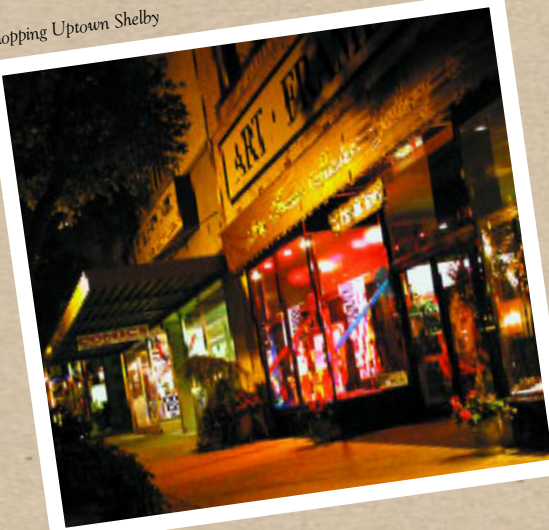
Colonial Braided Rug Outlet • Shelby, NC
Braided rugs • 3414 W. Stagecoach Trail
(704) 538-1824 or (800) 676-6922
Open: Monday – Thursday, 7 a.m. to 4 p.m.

J & D Furniture Co. • Shelby, NC
108-110 N. Lafayette St. • (704) 487-6385
Open: Monday – Friday, 9 a.m. to 6 p.m.
Saturday, 9 a.m. to 5 p.m.

SDF Fashion • Shelby, NC
Family clothing and uniforms
1038 Sam Lattimore Road • (704) 487-0641
Open: Monday – Saturday, 9 a.m. to 5:30 p.m.

Timm's Furniture & Appliance Company
Furniture and appliances • Kings Mountain, NC
909 S. Battleground Avenue • (704) 739-5656
Open: Monday – Friday, 9 a.m to 6 p.m.
Saturday, 9 a.m. to 2 p.m.

Shopping Uptown Shelby





Mi Pueblito Mexican Restaurant

Bridges Barbecue Lodge

What's Cooking?

Barbecue

- Alston Bridges Barbecue, Inc.** • Shelby, NC
620 Grover Street • (704) 482-1998
- Bridges Barbecue Lodge, Inc.** • Shelby, NC
2000 E. Dixon Blvd. • (704) 482-8567
- Wendells Barbecue Restaurant**
Kings Mountain, NC • 1553 S. Battleground Ave.
(704) 739-5297

Fish Camps & Seafood

- Cotton's Seafood Restaurant** • Shelby, NC
1017 N. Post Road • (704) 484-0978
- Fisherman's Feast** • Shelby, NC
1215 E. Marion Street • (704) 487-6000
- Kelly's Seafood** • Shelby, NC
1204 E. Dixon Blvd. • (704) 482-9941
- Love's Fish Box** • Kings Mountain, NC
Take-out only • 1104 Shelby Rd. • (704) 739-4036
- Shelby Fish Camp** • Shelby, NC
1025 E. Dixon Blvd. • (704) 482-7391
- The Pier** • Kings Mountain, NC
1058 York Road • (704) 730-1000

American & Steaks

- Applebee's Neighborhood Grill & Bar**
Shelby, NC • 433 Earl Road • (704) 484-9222
- Fatz Café** • Shelby, NC
1235 E. Dixon Blvd. • (704) 482-8116
- Golden Corral** • Shelby, NC
1108 E. Dixon Blvd. • (704) 481-8283
- Ichabod's Public House** • Shelby, NC
Fun place, young and family oriented.
233 S. Lafayette Street • (704) 482-8243
- Joe's Place Grill & Pub** • Shelby, NC
All cable sports; entertainment available.
209 S. Lafayette St. • (704) 482-4603
- Ken & Mary's Restaurant** • Shelby, NC
(inside Days Inn) • 1437 W. Dixon Blvd.
(704) 471-1002
- Sagebrush Steakhouse** • Shelby, NC
1237 E. Dixon Blvd. • (704) 471-2301

Chinese & Japanese

- Chen's Chinese Restaurant** • Shelby, NC
Specialities: Spicy ginger shrimp and peking pork.
209 W. Dixon Blvd. • (704) 484-9669
- China Royal Restaurant** • Shelby, NC
201 W. Marion Street • (704) 482-3916
- China Town Restaurant** • Shelby, NC
Creek Plaza Super Wal-Mart • (704) 482-7335
- Nakata Japanese Steak House Seafood & Sushi**
Shelby, NC • Food prepared at your table.
1681 E. Dixon Blvd. • (704) 482-1889
- Q Dynasty** • Shelby, NC
700 E. Dixon Blvd. • (704) 471-1588
- Yamato Japanese Steak & Seafood** • Shelby, NC
Food prepared at your table.
1683 E. Dixon Blvd. • (704) 471-0647
- Yamato Express** • Shelby, NC
(704) 471-0084
- Yamato Express II** • Kings Mountain, NC
Kings Mountain Plaza Shopping Center
King Street • (704) 739-2860

American & Sandwiches

Broad River Coffee Company • Boiling Springs, NC
105 S. Main • (704) 434-8487

Carousel Ice Cream LLC • Shelby, NC
2001 E. Dixon Blvd. #44 • (704) 481-8575

Chat-N-Nibble • Kings Mountain, NC
Featuring omelets, luncheon specials and
homemade desserts. • 415 N. Piedmont
(704) 734-0100

Tater's Café & Eatery • Lattimore, NC
202 Price Street • (704) 434-6161

Ham's Restaurant • Shelby, NC
1910 E. Dixon Blvd. • (704) 471-1166
Call about entertainment available.

J-Lynn's Sports Bar & Grill • Shelby
239 Dixon Blvd. • Entertainment

Jerry's Mini Mart

4400 Polkville Road • (704) 538-0996

Kisers Minit Grill • Kings Mountain, NC
247 Battleground Ave. • (704) 739-4686

Linwood Produce/Restaurant • Kings Mountain, NC
805 N. Cleveland Ave. • (704) 739-7308

Shelby Cafe • Shelby, NC

Classic southern small town friendly.

220 S. Lafayette Street • (704) 487-8461

Steak-n-Hoagie • Shelby, NC

236 S. Lafayette St. • (704) 480-1002

Shelby Ice Cream & Deli • Shelby, NC

201 N. Lafayette Street • (704) 487-6242

Sub Factory • Kings Mountain, NC

124-A West Gold St. • (704) 739-4255

Swooger's • Kings Mountain, NC

1016 Shelby Road • (704) 734-1838

Martha's All-American Foot Long Hot Dogs

Shelby, NC • 923 S. Lafayette Street
(704) 487-1616

Uptown Bagel & Deli • Shelby, NC

Great sandwiches and bagels.

301-B E. Warren Street • (704) 484-8889

Mexican

El Paso Mexican Restaurant • Shelby, NC
1230 E. Dixon Blvd. • (704) 481-0397

Mi Pueblito • Shelby, NC
213 W. Warren St. • (704) 482-5155

Monterrey Mexican Restaurant • Shelby, NC
301 S. DeKalb St. • (704) 481-9938

Italian & Greek

Bellatoni's • Shelby, NC

"Old world" flavor. • 210 S. Lafayette Street

Don's Italian Restaurant • Shelby, NC
115 E. Dixon Blvd. • (704) 481-1222

Italian Garden Restaurant • Boiling Springs, NC
Homemade lasagna; house special pizza.

105 Main Street • (704) 434-9290

The Clock • Shelby, NC

210 W. Dixon Blvd. • (704) 484-3334

Tops Pizza Factory • Shelby, NC

1167 E. Marion St. • (704) 482-5000



Casual Elegance & Catering

5 East • Shelby, NC

Fine dining offering a variety of foods & catering service • 5 East Marion Street
(704) 487-8266

Ni Fen Bistro • Shelby, NC

Italian, Asian and American cuisine and catering service • 108 E. Warren Street
(704) 481-1155

B & C Catering • Shelby, NC

Previously known as Rose Hill. Call Betsy or Clara for your next event at (704) 481-9920 or (704) 482-1966

The Cup and Saucer Tea Room & Fine Gifts, Inc.

Kings Mountain, NC • 107 W. King St.
(704) 730-0384



5 East

How to Get Around

Airports

Charlotte Douglas International Airport

(704) 359-4013 • 45 minutes via I-85

Asheville Regional Airport

(828) 684-2226 • 1.5 hours via US 74/I-26

Greenville/Spartanburg Airport

(864) 877-7426 • 1.5 hours via I-85/I-26

Shelby Airport

830 College Ave. • Shelby • (704) 471-0026

Car Rentals

Enterprise Rent-A-Car • (800) 325-8007

or (704) 484-8655

Hammond Auto Rentals • (704) 484-0095

Car Rentals of Shelby • (704) 482-0089

Ford Rental System • (704) 482-6791 ext. 204

Rental Center • (704) 482-8571

Alamo • (800) 327-9633

Avis • (800) 831-2847

Hertz • (800) 654-3131

Thrifty • (800) 367-2277

Leasing Services Inc. • (704) 482-2491

Taxis / Buses

AA United • (704) 482-7000

AAL&B Taxi Service • (704) 471-0333

East Marion Cab Co. • (704) 487-6200

Lineberger Street Cab • (704) 482-7035

TACC/CCT (public transit) • (704) 482-6465

Greyhound Bus Line • (800) 231-2222

Rail Service

Am Trak • (800) 872-7245

Passenger Station • (704) 376-4416

1914 N. Tryon St. • Charlotte, NC

Regional Day Trips

Grandfather Mountain

1 (828) 733-4337 or 1 (800) 468-7325

Chimney Rock Park

1 (828) 625-9611 or 1 (800) 277-9611

Hickory Furniture Mart

1 (800) 462-MART

Schiele Museum

(704) 866-6900

Daniel Stowe Botanical Garden

(704) 825-4490

Cowpens National Battlefield, SC

1 (864) 461-2828

Biltmore Estate

1 (800) 543-2961

Blue Ridge Parkway

1 (828) 298-0398

Discovery Place

(704) 372-6261 or 1 (800) 935-0553

Paramount's Carowinds Amusement Park

1 (800) 888-4386

IMPORTANT NUMBERS

Emergency/Fire/Police	911
Cleveland Regional Medical Center	(704) 487-3000
Kings Mountain Hospital	(704) 739-3601
Crawley Memorial Hospital, Boiling Springs	(704) 434-9466
Poison Control	(800) 848-6946
AAA Emergency Road Service	(800) 222-4357
National Weather Service	(864) 848-3859
Chamber of Commerce	
Shelby	(704) 487-8521
Kings Mountain	(704) 739-4755
Upper Cleveland	(704) 538-7124
Uptown Shelby Association, Inc.	(704) 484 3100
Kings Mountain Business & Professional Association	(704) 734-0044
Kings Mountain Downtown Revitalization	(704) 739-4755
Cleveland County Economic Development Commission	(704) 484 4999

Please visit our website
www.clevelandchamber.org

This publication is produced by the
Cleveland County Travel & Tourism
Development in cooperation with the
Cleveland County Information
Technology Department.

Every effort has been made to provide
accurate information in this brochure,
but we assume no responsibility for
errors, changes, or omissions.

Please call numbers to verify information.

Photography courtesy of
Westmoreland Printers, Inc.
Yount Graphic Design • McNeilly Photography
5 East • Gardner-Webb University
City of Kings Mountain • Shelby Star
Carroursell Friends

Design, layout and production by:
Westmoreland Printers, Inc.
& Yount Graphic Design

Publishing date August 2004



Cleveland County Chamber
200 S. Lafayette Street
Shelby, NC 28150
(704) 487-8521
Fax: (704) 487-7458
www.clevelandchamber.org
www.clevelandcounty.biz

*We hope that you enjoyed your visit and
look forward to having you back soon!*